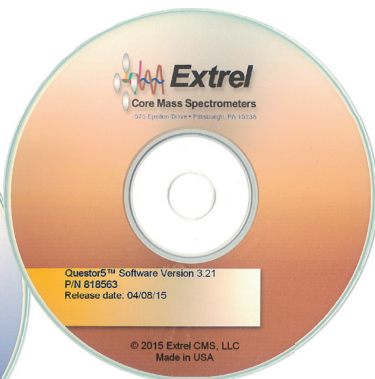
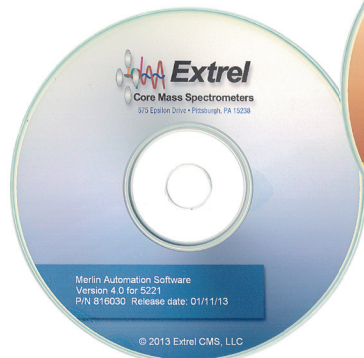
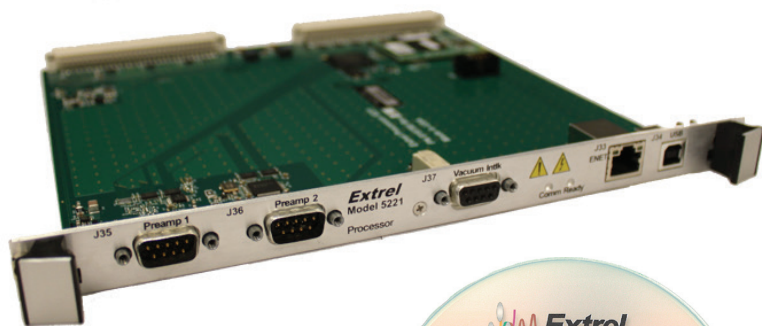




# 5221 Processor Upgrade Kit

## FOR MAX300 AND RESEARCH SYSTEMS

The **5221 Processor Upgrade Kit** replaces your existing DSP Board in the 5221 Command System and PCI card in your computer with a new Processor board. PCI cards are no longer compatible with nearly all modern computers and both PCI cards and DSP boards are now obsolete from Extrel. It's time to upgrade your communication to the digital world!



- Your choice of Ethernet or USB communication
- Use a laptop to control your instrument
- Includes latest version of software with improved features
- Compatible with Windows 7 Pro (32 or 64 bit)
- Windows 10 compatibility coming soon!
- Kit includes all required cables and adapters for a direct swap
- FPGA chip and on-board processor
- Upgradeable firmware for future revisions
- Not compatible with electronics other than 5221

### Part Numbers:

\*MAX300-IG/IGX/AIR/BIO = 821196

\*MAX300-LG/EGA = 821114

\*All Research Systems = 821111

**Ask your Authorized Extrel Representative for a quote.**

**Visit [www.extrel.com](http://www.extrel.com) to find your Rep.**

**For United States, contact Extrel Support.**

Extrel CMS, LLC 575 Epsilon Drive, Suite 2, Pittsburgh, PA 15238

Support Tel: +1.412.967.5754

Email: [support@extrel.com](mailto:support@extrel.com)

Web: [www.extrel.com](http://www.extrel.com)