

Sensors / Feedthroughs / Crystals

High Quality Sensors and Feedthroughs



SYCON SENSORS / FEEDTHROUGHS AND CRYSTALS

Using industry standard 6 MHz crystals Sycon produces quality sensors and feedthroughs that support the vacuum coating industries. All products are made with vacuum safe materials, Stainless Steel, Teflon and Alumina ceramics. Sycon carries a full standard line of products and will create customized sensor packages for more exotic configurations. Our sensors are designed for easy crystal changes while remaining rugged enough for demanding depositions. Sycon's compact shutter designs give the ability to have a crystal saving shutter without taking up valuable vacuum space. The long life shutter actuator is a vacuum tight compact assembly with thousands of shutter cycles, for carefree operation. Robust design of all products will handle the tough jobs.

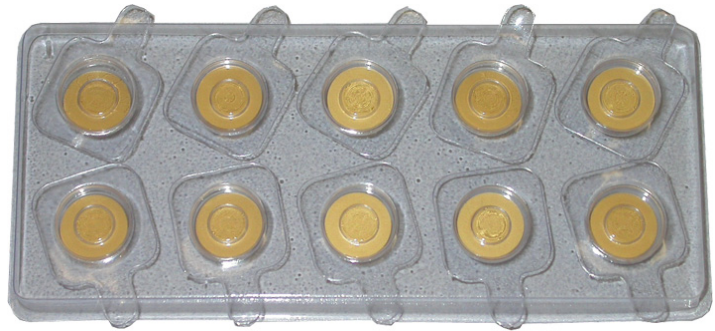
Quality Sensors / Feedthroughs and Crystals for vacuum depositions.

FEATURES

- High quality construction
- Single and dual designs
- Non bake able and bake able designs
- Fully Leak Checked feedthroughs
- Shuttered sensors, dual and single
- Easy Crystal changes
- Industry standard 6 MHz crystals
- Custom Bake able and standard arrangements per customers specification

Sensor / Feedthroughs / Crystal Specifications

Crystal Sensor	Industry standard 6 MHz
Max Temperature	200°C non-Bake able
	250°C Bake able
	150°C In-Vac Oscillator Sensor
Sensor Mounting	Rear of body , #4-40 Tapped
Materials	304 SS, Alumina, Teflon
Crystal	Quartz with Gold Electrodes
Water Temp	50°C
Connection	Microdot Miniature



500-117 - 10 Pack Gold Crystals

Ordering Information

- 500-117 Gold sensor crystals (10 Pack)
- 500-103 Low profile sensor package
- 500-009/L Bake able Sensor, straight,
- 500-065/L Bake able Sensor with shutter
- 500-050/L Dual Bake able sensor
- 500-016 1" bolt F/T 1e, 2f
- 501-012 1" bolt F/T, 2e, 3f
- 500-017 2 3/4" Conflat F/T, 1e, 2f
- 501-020 2 3/4" Conflat F/T, 2e, 3f
- 500-051 Sensor shutter assembly
- 500-088 Right angle sensor
- 500-043 Right angle sensor package

L=Length: e = Electrical: f = Fluid

